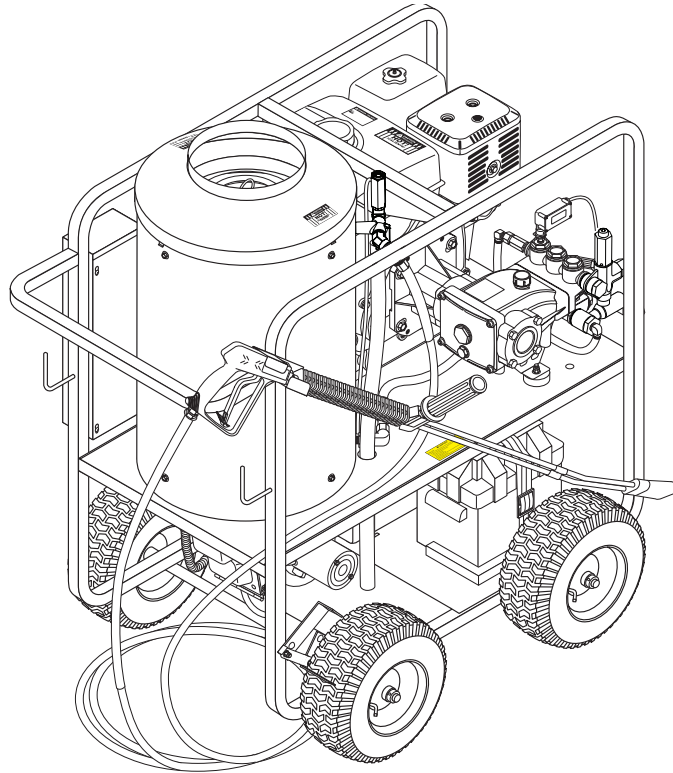




OPERATOR'S MANUAL



MODEL #**ORDER #**

SGP-302517

1.110-059.0

SGP-303037

1.110-054.0

SGP-353037

1.110-055.0

SGP-353037

1.110-068.0

SGP-353037E

1.110-056.0

SGP-353037E

1.110-069.0

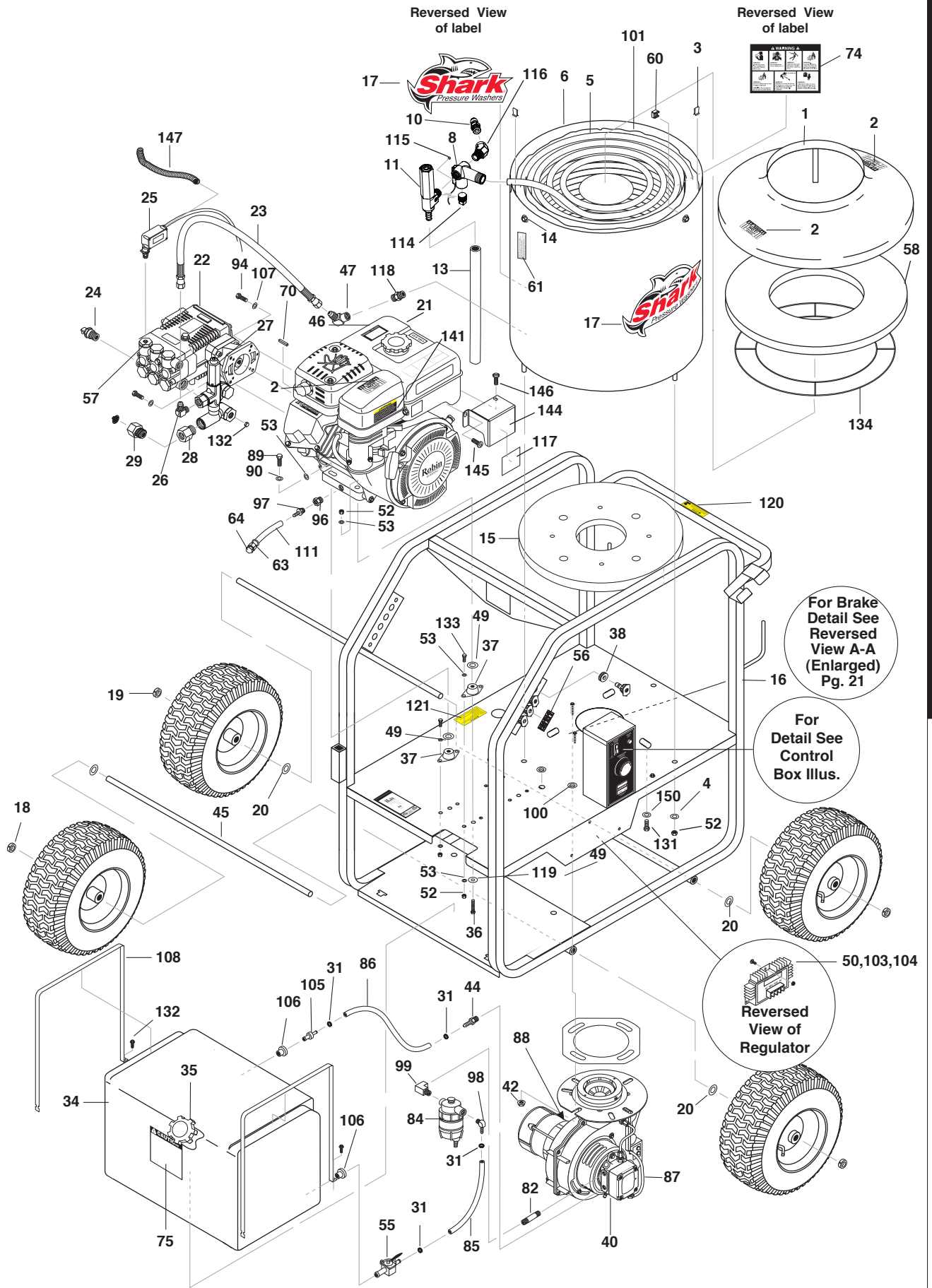
SGP-403537E

1.110-057.0

SGP-403537E

1.110-070.0

EXPLODED VIEW - 059.0 MODELS

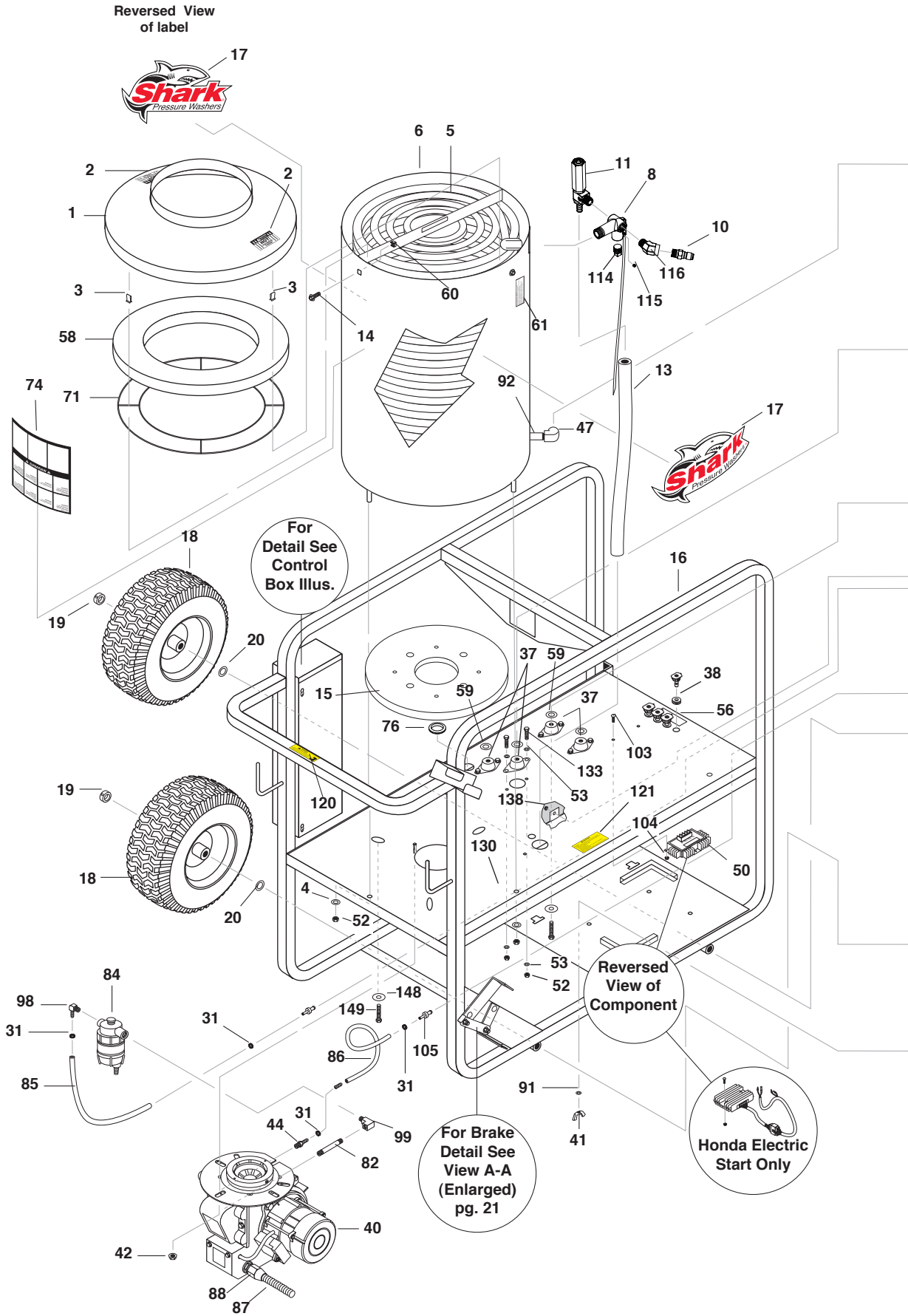


For Brake Detail See Reversed View A-A (Enlarged) Pg. 21

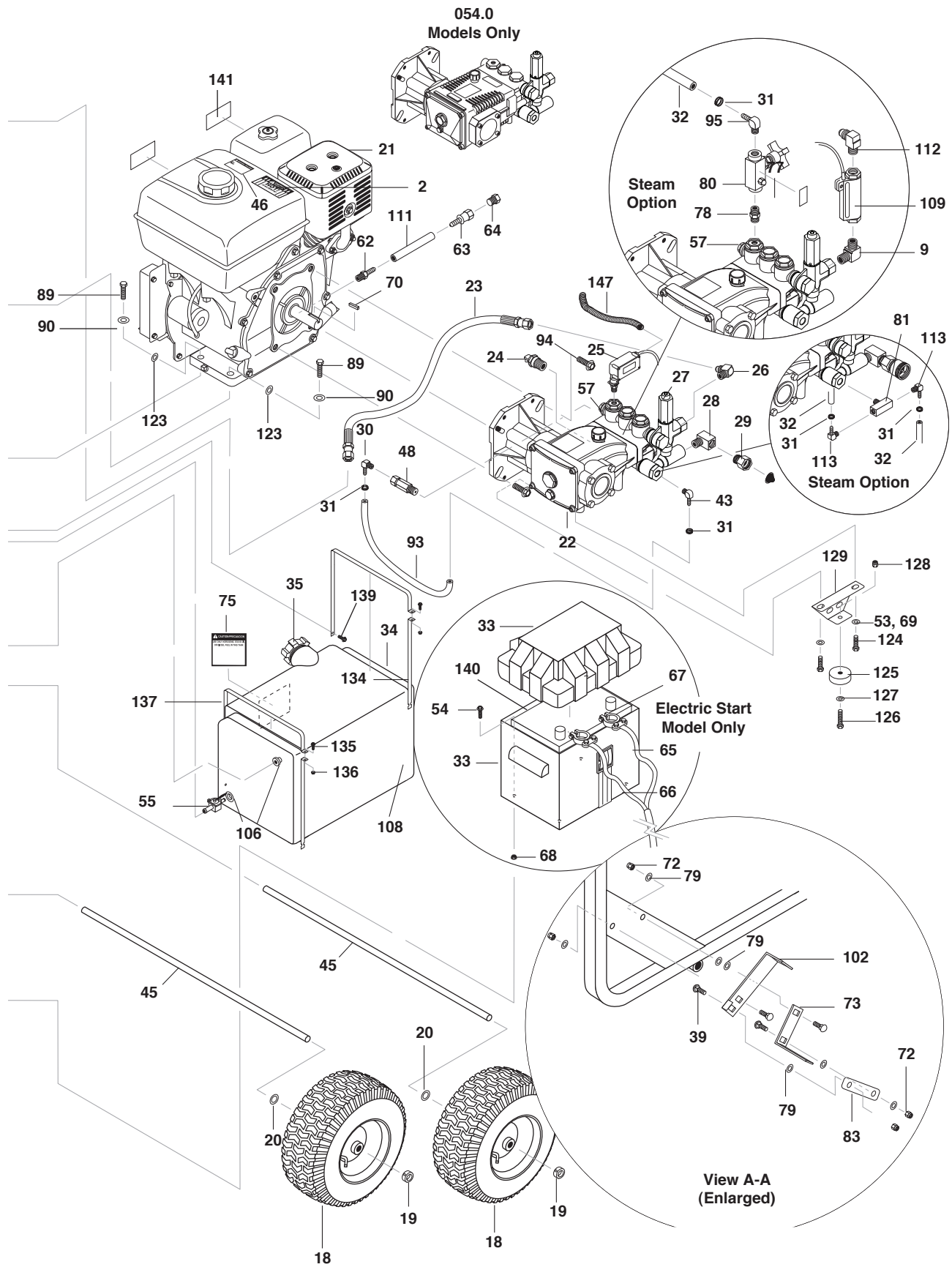
For Detail See Control Box Illus.

Reversed View of Regulator 50,103,104

EXPLODED VIEW - 054.0, 055.0, 056.0, 057.0 MODELS



EXPLODED VIEW - 054.0, 055.0, 056.0, 057.0 MODELS



EXPLODED VIEWS PARTS LIST

| ITEM | PART NO. | DESCRIPTION | QTY |
|------|-------------|---|----------|
| 1 | 8.719-913.0 | Top Hat, Coil | 1 |
| 2 | 9.800-006.0 | Label, Hot/Caliente w/Arrows Warning | 3 |
| 3 | 9.802-825.0 | Clip, Retaining, U-Type | 4 |
| 4 | 9.198-004.0 | 3/8 USS F/W Zinc | 4 |
| 5 | 8.925-220.0 | Spare Coil, Dura SCH 80 MTY 15" DIA | 1 |
| | 8.919-133.0 | Coil Assembly (302517) | 1 |
| 6 | 8.919-732.0 | Wrap, Outer Coil -07, Weldment (303037, 353037, 353037E, 403537E) | 1 |
| | 8.919-733.0 | Coil, Wrap, Outer, Weldment(302517) | 1 |
| 8 | 9.149-003.0 | Manifould Coil Outlet Discharge | 1 |
| 9 | 9.803-044.0 | Elbow, 3/8" Male Pipe, (Steam Option) | 1 |
| 10 | 9.802-171.0 | Nipple, 3/8" x 3/8" NPT ST Male | 1 |
| 11 | 8.902-433.0 | Valve Safety Relief | 1 |
| 13 | 8.711-785.0 | Hose, 3/8" Push-On, Conduit | 2.75 ft. |
| 14 | 9.802-753.0 | Screw, 1/4" x 3/4" HH NC (303037, 353037, 353037E, 403537E) | 4 |
| | | (302517) | 8 |
| 15 | 9.802-900.0 | Insulation, Tank Bottom, 1" Blanket | 1 |
| 16 | 9.803-069.0 | Assembly, Frame, Large (054.0, 055.0, 056.0, 057.0) | 1 |
| | 9.803-120.0 | Assembly, Frame, Small (059.0) | 1 |
| | 8.922-517.0 | Assembly, Frame (068.0, 069.0, 070.0) | 1 |
| 17 | 8.900-870.0 | Label, Shark, Die-Cut | 2 |
| 18 | 8.754-435.0 | Wheel & Pu Tire Assy, 12" Steel Rim | 4 |
| 19 | 9.802-782.0 | Collar, 5/8" Bore Shaft | 4 |
| 20 | 9.802-810.0 | Washer, 5/8", Flat, SAE | 4 |
| 21 | 9.802-314.0 | Engine, Robin, 211cc, 200W (302517) | 1 |
| | 8.750-576.0 | Engine, Honda, GX270 OUT2 QAR2 270cc, 18A (303037) | 1 |
| | 8.750-577.0 | Engine, Honda, GX340 UT2QNR2, 337cc, 18A (353037) | 1 |
| | 8.750-578.0 | Engine, Honda, GX340 QNR2, 337cc E/S, 18A (353037E) | 1 |
| | 8.750-579.0 | Engine, Honda, GX390 UT2 QNR2, 389cc E/S, 18 Amp (403537E) | 1 |
| 22 | 8.904-818.0 | Pump, SG-3030G (302517) | 1 |
| | 8.923-801.0 | Pump, SP3035G1 (303037) | 1 |
| | 8.921-766.0 | Pump, SS3540G.3 (353037, 353037E, 403537E) | 1 |
| 23 | 8.918-427.0 | Hose, 3/8" x 36" 2 Wire Pressure Loop | 1 |
| 24 | 8.707-256.0 | Pump Protector, 1/2" PTP | 1 |
| 25 | 9.802-458.0 | Switch, Pressure, N/O, 1/4" NPT SS (Except Steam Option) | 1 |
| 26 | 9.802-039.0 | Elbow, 1/2" JIC, 3/8", 90° | 1 |
| | 9.802-042.0 | Elbow, 1/2" JIC, 3/8", FEM, 90 DGR | 1 |
| 27 | 9.127-018.0 | UU1 3500PSI, Universal Unloader | 1 |
| | 8.754-696.0 | Unloader, VBT Banjo 1/2M, 3/8M, 3000PSI (550.0) | 1 |
| 28 | 8.706-984.0 | Adapter, 1/2" x 1/2" Pipe | 1 |
| 29 | 9.802-146.0 | Swivel, 1/2" MP x 3/4" GHF w/Strainer | 1 |
| 30 | 8.706-955.0 | Hose Barb, 1/4" Barb x 1/8" ML Pipe, 90° (303037, 353037, 353037E, 403537E) | 1 |
| 31 | 6.390-126.0 | Clamp, Hose, UNI .46 - .54 (303037, 353037, 353037E, 403537E) | 6 |
| | | (302517) | 4 |

EXPLODED VIEWS PARTS LIST

| ITEM | PART NO. | DESCRIPTION | QTY |
|------|-------------|--|----------|
| 32 | 9.802-254.0 | Hose, 1/4", Push-On, Fuel Line (Steam Option) | 14 in. |
| 33 | 9.802-075.0 | Box, Battery, M-100 (353037E, 403537E) | 1 |
| | 9.802-076.0 | ▲ Plate, Battery Box, Large, PolyPro (353037E, 403537E) | 1 |
| 34 | 9.802-081.0 | Tank, Fuel, 6 Gallon | 1 |
| 35 | 9.802-089.0 | Cap, Fuel Tank, Plastic H60-AV | 1 |
| 36 | 9.802-832.0 | Bolt, 5/16" x 2-3/4" Whiz Loc (302517) | 2 |
| 37 | 9.803-308.0 | Mount, Rubber Vibration, 5/16", 70 Duro (302517) | 4 |
| | 8.932-992.0 | Mount, Rubber Vibration, 3/8", 70 Duro (303037, 353037, 353037E, 403537E) | 4 |
| 39 | 9.802-705.0 | Bolt, 1/4" x 1" Carriage | 4 |
| 40 | | Burner Assy, See Burner Spec's Page 40 | |
| 41 | 9.802-809.0 | Nut, 5/16" Wing (353037E, 403537E) | 4 |
| 42 | 9.802-781.0 | Nut, 3/8" Flange, Whiz Loc | 4 |
| 43 | 8.706-958.0 | Hose Barb, 1/4" Barb x 1/4" Pipe, 90° (303037, 353037, 353037E, 403537E) | 1 |
| 44 | 9.802-138.0 | Hose Barb, 1/4" Barb x 1/4" ML Pipe | 1 |
| 45 | 8.918-837.0 | Axle, 30" (303037, 353037, 353037E, 403537E) | 2 |
| | 8.922-672.0 | Axle Long (302517) | 2 |
| 46 | 9.800-008.0 | Label, Danger Cool Engine | 1 |
| 47 | 9.802-043.0 | Elbow, 1/2" JIC x 1/2" Female, 90° (303037, 353037, 353037E, 403537E) | 1 |
| | 9.802-042.0 | Elbow, 1/2" JIC, 3/8", 90° (302517) | 1 |
| 48 | 9.802-190.0 | Valve, E-Z Start, 3/8" MPT x 1/8" FPT (303037, 353037, 353037E, 403537E) | 1 |
| 49 | 8.719-000.0 | Washer, 5/16" x 1-1/4", Fender, SAE (302517) | 4 |
| 50 | 9.802-531.0 | Regulator, Voltage, 15 V (Pull Start) | 1 |
| | 9.803-835.0 | Regulator/Rectifier, 18 Amp (Electric Start) | 1 |
| 51 | 9.802-709.0 | Bolt, 5/16" x 3/4" NC (302517) | 10 |
| 52 | 9.802-776.0 | Nut, 5/16" ESNA (302517) (303037, 353037, 353037E, 403537E) | 14 12 |
| 53 | 8.718-980.0 | Washer, 5/16" Flat (054, 302517) (353037, 353037E, 403537E) | 24 18 |
| 54 | 9.802-755.0 | Screw, 5/16" x 1-1/4", Whiz Loc (353037E, 403537E) | 4 |
| 55 | 9.802-177.0 | Valve, 1/4" Shut OFF | 1 |
| 56 | 9.800-108.0 | Label, Nozzle 0, 15, 25, 40 | 1 |
| 57 | 9.804-022.0 | Cap, Valve w/1/4" Port (303037, 302517) | 1 |
| | 9.802-632.0 | Cap, Valve w/1/4" Gauge Port (353037, 353037E, 403537E) | 1 |
| 58 | 9.802-904.0 | Insulation, Tank Head | 1 |
| 59 | 9.802-809.0 | Washer 1/2" Flat (303037, 353037, 353037E, 403537E) | 4 |
| 60 | 9.802-793.0 | Nut, Cage, 1/4" x 16 Gauge (303037, 353037, 353037E, 403537E) (302517) | 5 4 |
| 61 | 9.800-021.0 | Label, Hot Water Outlet | 1 |
| 62 | 9.802-154.0 | Plug, Push-On, Oil Drain, Honda (303037, 353037, 353037E, 403537E) | 1 |
| 63 | 9.802-153.0 | Swivel, 1/4" JIC FEM, Push-On | 1 |
| 64 | 9.802-125.0 | Plug, 1/4" JIC | 1 |
| 65 | 9.803-836.0 | Wire, THWN, 6 Gauge, Red (353037E, 403537E) | 33" |
| 66 | 9.803-837.0 | Wire, THWN, 6 Gauge, Black (353037E, 403537E) | 45" |
| 67 | 8.716-608.0 | Terminal, Battery, Marine (890904) (353037E) | 2 |
| 68 | 9.802-778.0 | Nut, 5/16" Whiz Loc Flange | 4 |

EXPLODED VIEW PARTS LIST

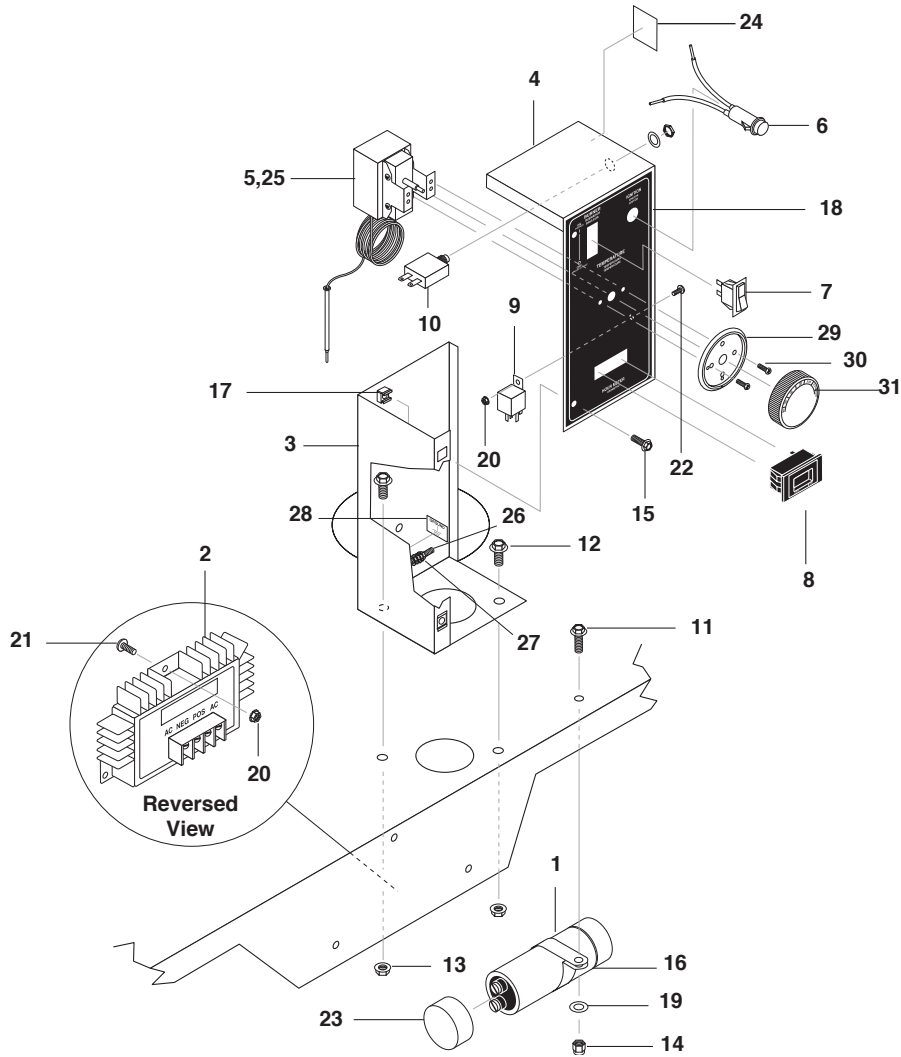
| ITEM | PART NO. | DESCRIPTION | QTY |
|------|-------------|---|------------|
| 69 | 9.802-816.0 | Washer, 7/16" Lock (353037, 353037E, 403537E) | 2 |
| 70 | 9.802-958.0 | Key, 0.185 SQR x 1.75" (302517) | 1 |
| | 9.802-959.0 | Key, 0.247 SQR x 2.125 (303037, 353037, 353037E, 403537E) | 1 |
| 71 | 9.803-108.0 | Retainer Ring, Insulation | 1 |
| 72 | 9.802-773.0 | Nut, 1/4"-20, ESNA | 4 |
| 73 | 9.802-996.0 | Bracket, Brake Pad, Black | 1 |
| | 8.922-519.0 | Bracket, Brake Pad, (068.0, 069.0, 070.0) | 1 |
| 74 | 9.800-094.0 | Label, Warning, Text | 1 |
| 75 | 9.800-002.0 | Label, Use Only Kerosene | 1 |
| 76 | 8.750-647.0 | Grommet, Rubber, 1 1/2" (303037, 353037, 353037E, 403537E) | 1 |
| 77 | 9.800-026.0 | Label, Open For Steam (Steam Option) | 1 |
| 78 | 9.802-010.0 | Nipple, 1/4", Hex, Steel (Steam Option) | 1 |
| 79 | 9.802-802.0 | Washer, 1/4" Flat, SAE | 12 |
| 80 | 9.802-187.0 | Valve, Flow Control w/Metering (Steam Option) | 1 |
| 81 | 9.802-120.0 | Tee, 1/4" Branch Male, Legacy Pumps (Steam Option) | 1 |
| 82 | 8.706-803.0 | Nipple, 1/4" x 2 1/2", Brass | 1 |
| 83 | 9.802-997.0 | Linkage, Brake, Black | 1 |
| | 8.922-520.0 | Linkage, Brake (068.0, 069.0, 070.0) | 1 |
| 84 | 8.725-306.0 | Filter, Parker Fuel/Oil/H ₂ O (10 Micron), Generic | 1 |
| 85 | 9.802-254.0 | Hose, 1/4" Push On | 9" |
| 86 | 9.802-254.0 | Hose, 1/4" Push On (303037, 353037, 353037E, 403537E) (302517) | 7" 11" |
| 87 | 9.802-428.0 | Service Cord, 12/3 SJOWA (303037, 353037, 353037E, 403537E) (302517) | 40" 32" |
| 88 | 9.802-519.0 | Strain Relief, 1/2" | 1 |
| 89 | 9.802-713.0 | Bolt, 5/16" x 1-1/2" (302517) | 2 |
| | 9.802-728.0 | Bolt, 3/8-16" x 2", HH Zinc (303037, 353037, 353037E, 403537E) | 4 |
| 90 | 9.802-813.0 | Lock Washer, 5/16" | 2 |
| | 9.802-814.0 | Washer, 3/8", Lock Split Ring (303037, 353037, 353037E, 403537E) | 4 |
| 91 | 9.802-813.0 | Lock Washer, 5/16" (353037E, 403537E) | 4 |
| 92 | 9.802-013.0 | Nipple, Galvanized, 1/2" x 2-1/2" (303037, 353037, 353037E, 403537E) | 1 |
| 93 | 9.802-254.0 | Hose, 1/4" Push On | 14" |
| 94 | 9.802-707.0 | Bolt, 5/16" - 24 x 3/4" NF (302517) | 4 |
| | 9.802-768.0 | Screw, 3/8" x 1-1/4" Whiz Loc (303037, 353037, 353037E, 403537E) | 4 |
| 95 | 9.802-143.0 | Elbow, 1/4" Hose Barb x 1/4" Pipe, Steam Option (0303037, 353037, 353037E, 403537E) | 1 |
| 96 | 9.803-052.0 | Reducer, M14 x 1/4" F (302517) | 1 |
| 97 | 9.802-138.0 | Hose Barb, 1/4" x Barb x 1/4" (302517) | 1 |
| 98 | 8.706-958.0 | Hose Barb, 1/4" Barb x 1/4" Pipe, 90° | 1 |
| 99 | 8.706-161.0 | Elbow, 1/4" Street, 90 Deg, Galv | 1 |
| 100 | 9.802-103.0 | Bushing, 5/8" Snap (302517) | 1 |
| 101 | 9.802-908.0 | Insulation, Blanket, 18" x 52", Fiberglass (302517) | 1 |
| 102 | 9.803-111.0 | Lever, Brake, Black | 1 |
| | 8.922-518.0 | Lever, Brake (068.0, 069.0, 070.0) | 1 |
| 103 | 9.802-771.0 | Screw, 10/32" x 3/4" BH SOC CS (303037, 353037, 302517) | 3 |
| | 9.802-762.0 | Screw, 10/32" x 1-1/4" RH SL (353037E, 403537E) | 2 |
| 104 | 9.802-695.0 | Nut, 10/32" Kep (353037E, 403537E) (303037, 353037, 302517) | 2 3 |
| 105 | 9.802-140.0 | Hose Barb, 1/4" Barb x 3/8", Double | 1 |
| 106 | 9.802-053.0 | Bushing, Rubber Nitrile | 2 |
| 107 | 9.802-813.0 | Washer, 5/16" Lock Split Ring (302517) | 4 |

EXPLODED VIEW PARTS LIST

| ITEM | PART NO. | DESCRIPTION | QTY |
|------|-------------|--|------------|
| 108 | 9.802-081.0 | Tank , Fuel 6 Gallon | 1 |
| 109 | 9.802-459.0 | Switch, MV60 Flow (Steam Option) | 1 |
| 110 | 9.802-104.0 | Bushing, 3/4" Snap (302517) | 1 |
| 111 | 9.802-254.0 | Hose, 1/4" Push-On (302517) (303037, 353037, 353037E, 403537E) | 7" 11" |
| 112 | 9.802-039.0 | Elbow, 1/2" JIC x 3/8", 90° (Steam Option) | 1 |
| 113 | 9.802-143.0 | Elbow, 1/4" x 1/4" Pipe (Steam Option) | 2 |
| 114 | 8.706-241.0 | Plug 3/8, SQ head | 1 |
| 115 | 9.196-012.0 | Screw, 10-24x1/4 Hex Set | 1 |
| 116 | 9.802-041.0 | Elbow, 3/8" STL, Street, 45° | 1 |
| 118 | 8.705-974.0 | Nipple, 3/4" Hex (302517) | 1 |
| 119 | 9.802-811.0 | Washer, Fender 302517) | 2 |
| 120 | 9.800-018.0 | Label, Tipover Hazard | 1 |
| 121 | 9.800-049.0 | Label, Cleaning Solution | 1 |
| 123 | 9.198-004.0 | Washer 3/8", SAE Flat (303037, 353037, 353037E, 403537E) | 4 |
| 124 | 9.802-744.0 | Bolt, 10 mm x 20 mm (353037, 353037E, 403537E) | 2 |
| | 9.802-741.0 | Bolt, 8 mm x 16 mm HEX Head (303037) | 2 |
| 125 | 9.802-066.0 | Pad, Soft Rubber | 1 |
| 126 | 9.802-722.0 | Bolt, 3/8" x 1-1/4", NC HH | 1 |
| 127 | 9.802-817.0 | Washer, 3/8" x 1", Steel | 1 |
| 128 | 9.197-003.0 | Nut, 3/8" ESNA | 1 |
| 129 | 8.933-024.0 | Rail, Pump Support (055.0, 056.0, 057.0) | 1 |
| | 9.804-533.0 | Rail, Pump Support (054.0) | 1 |
| | 8.922-527.0 | Rail, Pump Support ((068.0, 069.0, 070.0) | |
| 130 | 8.706-865.0 | Plug, 1/4" Countersunk | 1 |
| 131 | 9.802-710.0 | Bolt, 5/16" x 1", NC HH | 11 |
| 132 | 9.802-753.0 | Screw, 1/4-20 x 3/4" | 2 |
| 133 | 9.802-767.0 | Screw, 3/8 x 3/4 HH NC, Whiz | 2 |
| 134 | 9.803-093.0 | Fuel Strap, Short | 2 |
| | 8.922-615.0 | Fuel Strap, Short PA 1104 (068.0, 069.0, 070.0) | 2 |
| 135 | 9.802-767.0 | Screw, 3/8 Flange, Whiz | 2 |
| 136 | 9.802-781.0 | Nut, 3/8 Flange, Whiz Loc, NC | 2 |
| 137 | 8.930-122.0 | Strap, Fuel Tank | 2 |
| | 8.922-614.0 | Strap, Fuel Tank -07 (068.0, 069.0, 070.0) | 2 |
| 138 | 9.802-775.0 | Nut, 1/4" Flange, ZN | 2 |
| 139 | 9.802-754.0 | Screw, 1/4" X 1/2" HH NC, Whiz Loc (303037, 353037, 353037E, 403537E) | 2 |
| 140 | 8.716-499.0 | Battery, Sealed, D75S (403537E) | 1 |
| 141 | 8.751-096.0 | Label, Regulation 4442.6 | 1 |
| 144 | 8.921-570.0 | Throttle Cover | 1 |
| 145 | 9.802-743.0 | Bolt, M6 X 1.0X 12, Metric 8.8 SOC | 1 |
| 146 | 9.196-051.0 | Cheese Head Machine Screw M5x16mm | 1 |
| 147 | 9.802-447.0 | Conduit, Corrugated Tubing 1/4, 100FT/Roll (059.0) (054.0, 055.0, 056.0, 057.0) | 22" 25" |
| 148 | 9.802-819.0 | Washer, 7/16" x 2 1/2" | 3 |
| 149 | 9.802-710.0 | Screw 5/16" x 1"NC | 3 |
| 150 | 9.802-819.0 | WASHER, 7/16" x 2 1/2", ZINC, PG FOOT | 3 |

▲ Not Shown

CONTROL PANEL EXPLODED VIEW - 059.0 MODELS



059.0 CONTROL PANEL PARTS LIST

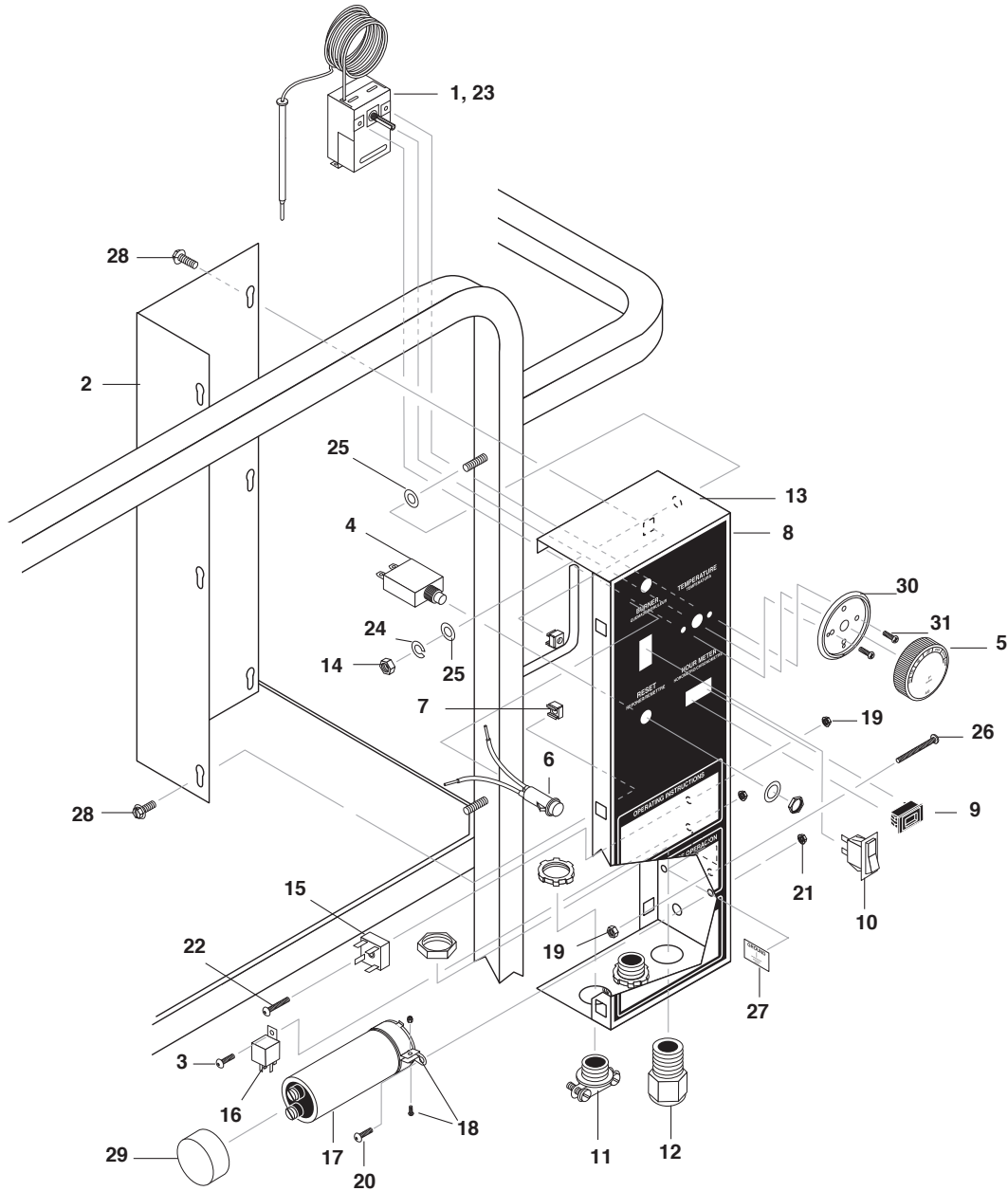
| ITEM | PART NO. | DESCRIPTION | QTY |
|------|-------------|---|-----|
| 1 | 9.802-528.0 | Capacitor | 1 |
| 2 | 9.802-531.0 | Regulator, Voltage, 15 Volt | 1 |
| 3 | 9.803-036.0 | Box, Electrical | 1 |
| 4 | 9.803-121.0 | Assembly, Cover, Electrical Box | 1 |
| 5 | 8.750-094.0 | Thermostat, Adjustable, 302°F | 1 |
| 6 | 9.802-456.0 | Light, Indicator, Green 12 Volt | 1 |
| 7 | 9.802-453.0 | Switch, Corvette RA901VB-B-1-V, Carling | 1 |
| 8 | 9.802-283.0 | Hour Meter, 24-240 Vac 50/60 Hz | 1 |
| 9 | 9.802-470.0 | Relay, P & B, VF4-41F11, 12VDC, 40AMP | 1 |
| 10 | 9.802-485.0 | Breaker, 1658-G41-02-P10-25A | 1 |
| 11 | 9.802-752.0 | Screw, 1/4" x 1-1/4" Hex, Whiz Loc | 1 |
| 12 | 9.802-754.0 | Screw, 1/4" x 1/2" HH NC, Whiz Loc | 2 |
| 13 | 9.802-775.0 | Nut, 1/4" Whiz Loc | 2 |
| 14 | 9.802-773.0 | Nut, 1/4", ESNA, NC | 1 |
| 15 | 9.802-764.0 | Screw, 10/32" x 3/4" Hex | 2 |

059.0 CONTROL PANEL PARTS LIST

| ITEM | PART NO. | DESCRIPTION | QTY |
|------|-------------|--|-----|
| 16 | 9.802-206.0 | Clamp, Hose | 1 |
| 17 | 9.802-791.0 | Nut, Cage, 10/32" x 16 Gauge | 2 |
| 18 | 8.900-907.0 | Label, Control Panel | 1 |
| 19 | 9.802-802.0 | Washer, 1/4", Flat, SAE | 1 |
| 20 | 9.802-695.0 | Nut, 10/32" Keps | 4 |
| 21 | 9.802-771.0 | Screw, 10/32" x 3/4" | 3 |
| 22 | 9.802-759.0 | Screw, 10/32" x 1/2" | 1 |
| 23 | 9.803-048.0 | Cap, Capacitor, 1.37 x 1.50 x .060 Blk, w/o Hole | 1 |
| 24 | 9.803-840.0 | Label, Reset | 1 |
| 25 | 9.802-447.0 | ▲ Conduit, 1/4" Split | 36" |
| 26 | 9.802-762.0 | Screw, 10/32" x 1-1/4" (Ground) | 1 |
| 27 | 9.802-695.0 | Nut, 10/32", Keps | 4 |
| 28 | 9.800-040.0 | Ground Label | 1 |
| 29 | 8.712-190.0 | Thermostat Mounting Plate | 1 |
| 30 | 8.718-779.0 | Screw 4mm x 6mm | 4 |
| 31 | 8.750-096.0 | Thermostat Dial | 1 |

▲ Not Shown

CONTROL PANEL PARTS LIST-303037, 353037, 353037E, 403537E



CONTROL PANEL PARTS LIST-303037, 353037, 353037E, 403537E

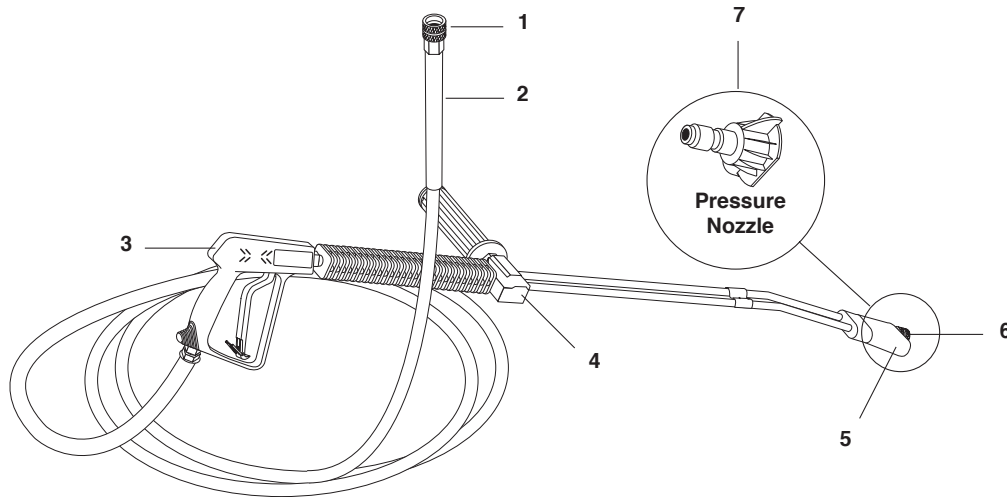
| ITEM | PART NO. | DESCRIPTION | QTY |
|------|-------------|--|-----|
| 1 | 8.750-094.0 | Thermostat, Adjustable, 302°F | 1 |
| 2 | 9.803-035.0 | Cover, Electric Box, Black | 1 |
| | 8.922-532.0 | Cover, Electric Box, (068.0, 069.0, 070.0) | 1 |
| 3 | 9.802-759.0 | Screw, 10/32" x 1/2" BHSOC, Black | 1 |
| 4 | 9.802-485.0 | Breaker, 1658-G41-02-P10-25A | 1 |
| 5 | 8.750-096.0 | Thermostat Dial | 1 |
| 6 | 9.802-456.0 | Light, Indicator, Green 12V | 1 |
| 7 | 9.802-791.0 | Cage, Nut, 10/32" x 16 Gauge | 6 |
| 8 | 8.900-921.0 | Label, Control Panel | 1 |
| | 8.753-778.0 | Label, Control Panel (068.0, 069.0, 070.0) | 1 |
| 9 | 9.802-283.0 | Hour Meter, 24-240 Vac 50/60 Hz | 1 |

CONTROL PANEL PARTS LIST-303037, 353037, 353037E, 403537E

| ITEM | PART NO. | DESCRIPTION | QTY |
|------|----------------------------|---|-----|
| 10 | 9.802-453.0 | Switch, Curvette RA901VB-B-1-V, Carling | 1 |
| 11 | 9.802-519.0 | Strain Relief, 1/2" Metal, Two Screw | 2 |
| 12 | 9.802-514.0 | Strain Relief, Small | 1 |
| 13 | 9.803-071.0 8.922-531.0 | Box, Electric, Black Box, Electric (068.0, 069.0, 070.0) | 1 |
| 14 | 9.802-788.0 | Nut, 5/16" Whiz Loc Flange | 2 |
| 15 | 9.802-530.0 | Rectifier, Bridge (353037E, 403537E) | 1 |
| 16 | 9.802-470.0 | Relay, P & B, VF4-41F11, 12VDC, 40AMP | 1 |
| 17 | 9.802-528.0 | Capacitor (303037, 353037) | 1 |
| 18 | 9.802-529.0 | Bracket, Capacitor (303037, 353037) | 1 |
| 19 | 9.802-695.0 | Nut, 10/32" Keps | 8 |
| 20 | 9.802-748.0 | Screw, 6/32" x 3/8", RND HD MCH (303037, 353037E) | 2 |
| 21 | 9.802-784.0 | Nut, 6/32" Keps (303037, 353037) | 3 |
| 22 | 9.802-771.0 | Screw, 10/32" x 3/4" BH SOC CS (353037E, 403537E) | 1 |
| 23 | 9.802-447.0 | ▲ Conduit, Split, 1/4" | 45" |
| 24 | 9.802-813.0 | Washer, 5/16", Lock, Split Ring | 2 |
| 25 | 9.802-806.0 | Washer, 5/16", Flat, Cut | 4 |
| 26 | 9.802-762.0 | Screw, 10/32" x 1-1/4" (Ground) | 1 |
| 27 | 9.800-040.0 | Label, Ground | 1 |
| 28 | 9.802-764.0 | Screw, 10/32" x 3/4", HEX | 6 |
| 29 | 9.803-048.0 | Cap, Capacitor, 1.37 x 1.5 x .06 Blk, w/o Hole (303037, 353037, 302517) | 1 |
| 30 | 8.712-190.0 | Thermostat Mounting Plate | 1 |
| 31 | 8.718-779.0 | Screw 4mm x 6mm | 4 |

▲ Not Shown

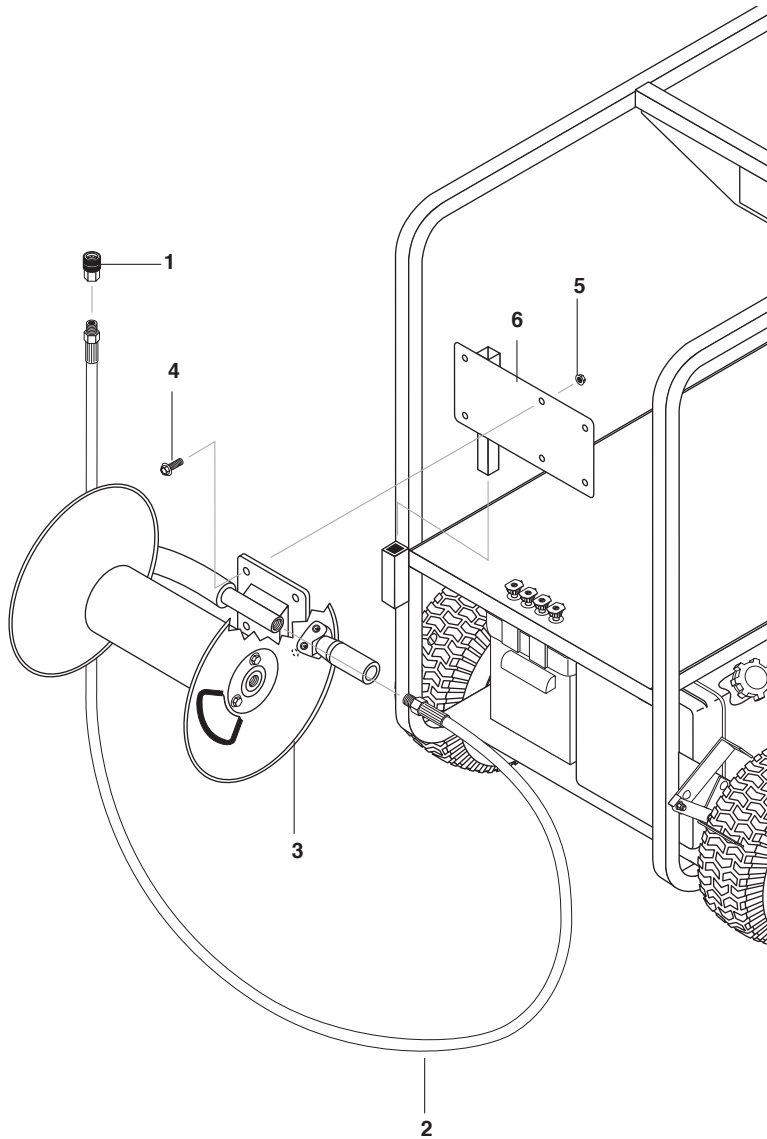
HOSE & SPRAY GUN ASSEMBLY



HOSE & SPRAY GUN PARTS LIST

| ITEM | PART NO. | DESCRIPTION | QTY |
|-------------|-------------|---|-----|
| 1 | 9.802-166.0 | Coupler, 3/8" Female | 1 |
| | 9.802-100.0 | ▲ Quick Coupler O-Ring LG | 1 |
| 2 | 8.925-130.0 | Hose, 3/8" X 50' 1W 4000PSI SW/SO/CPL (All Models Except 403537E) | 1 |
| | 8.925-132.0 | Hose, 3/8" X 50' 2W 6000PSI SW/SO/CPL (403537E) | 1 |
| 3 | 8.710-384.0 | Gun, St-1500, 5000 PSI, 10.4 Gpm | 1 |
| 4 | 9.802-222.0 | Wand, VP Zinc 1/4", w/Coupler, w/Soap Nozzle | 1 |
| | 9.802-694.0 | ▲ Repair Kit, VP Wand, SS Seat | 1 |
| 5 | 9.802-286.0 | Nozzle, 1/8", Soap Only, Brass | 1 |
| 6 | 9.802-165.0 | Coupler, 1/4" Male | 1 |
| | 9.802-096.0 | ▲ Quick Coupler, O-Ring, Small | 1 |
| 7 | 9.802-292.0 | Nozzle, SAQMEG 1503.5, Yellow (403537E, 302517, 303037) | 1 |
| | 9.802-293.0 | Nozzle, SAQMEG 2503.5, Green (403537E, 302517, 303037) | 1 |
| | 9.802-294.0 | Nozzle, SAQMEG 4003.5, White (403537E, 302517, 303037) | 1 |
| | 9.802-296.0 | Nozzle, SAQMEG 1504, Yellow (353037, 353037E) | 1 |
| | 9.802-297.0 | Nozzle, SAQMEG 2504, Green (353037, 353037E) | 1 |
| | 9.802-298.0 | Nozzle, SAQMEG 4004, White (353037, 353037E) | 1 |
| ▲ Not Shown | | | |

HOSE REEL OPTION

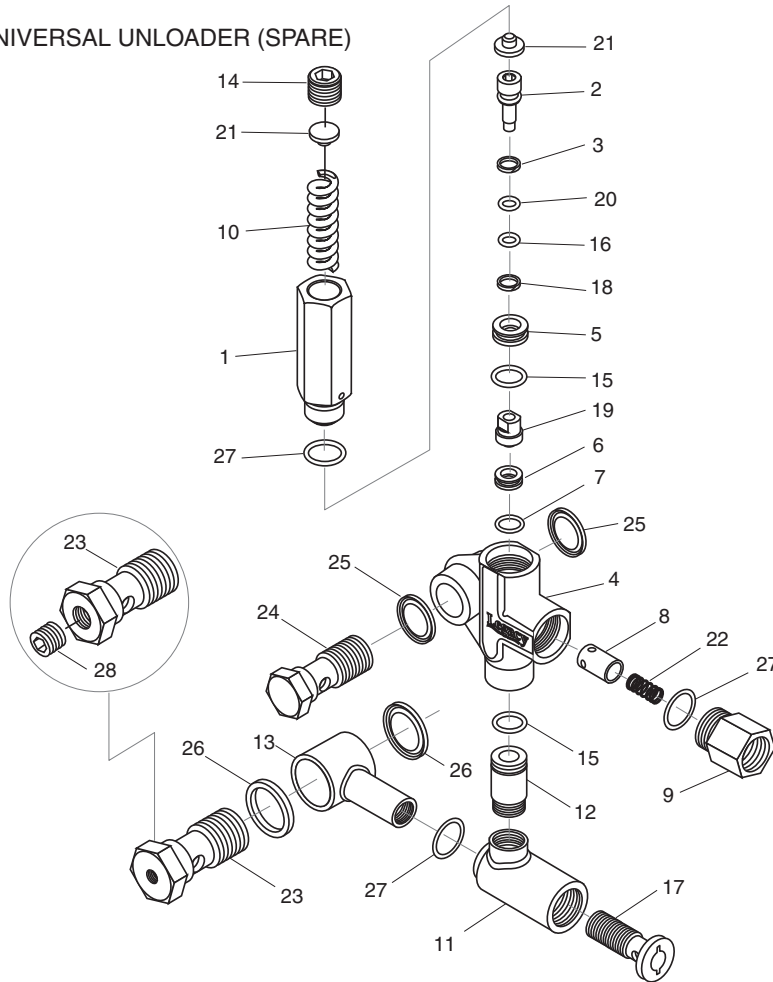


HOSE REEL PARTS LIST

| ITEM | PART NO. | DESCRIPTION | QTY |
|------|-------------|---|-----|
| 1 | 9.802-166.0 | Coupler, 3/8", Female, Brass | 1 |
| 2 | 9.802-244.0 | Hose, 3/8", 2 Wire Pressure Loop | 1 |
| 3 | 9.802-269.0 | Hose Reel, 100' Non-Pivot E-ZEE w/Pin Lock | 1 |
| 4 | 9.802-767.0 | Screw, 3/8" x 3/4" HH NC, Whiz Loc | 4 |
| 5 | 9.802-781.0 | Nut, 3/8" Flange, Whiz Loc, NC | 4 |
| 6 | 9.803-841.0 | Bracket, E-ZEE Hose Reel Right, Wrinkle Black | 1 |

UU1 UNLOADER EXPLODED VIEW

9.175-018.0
 UU1 3500PSI, UNIVERSAL UNLOADER (SPARE)

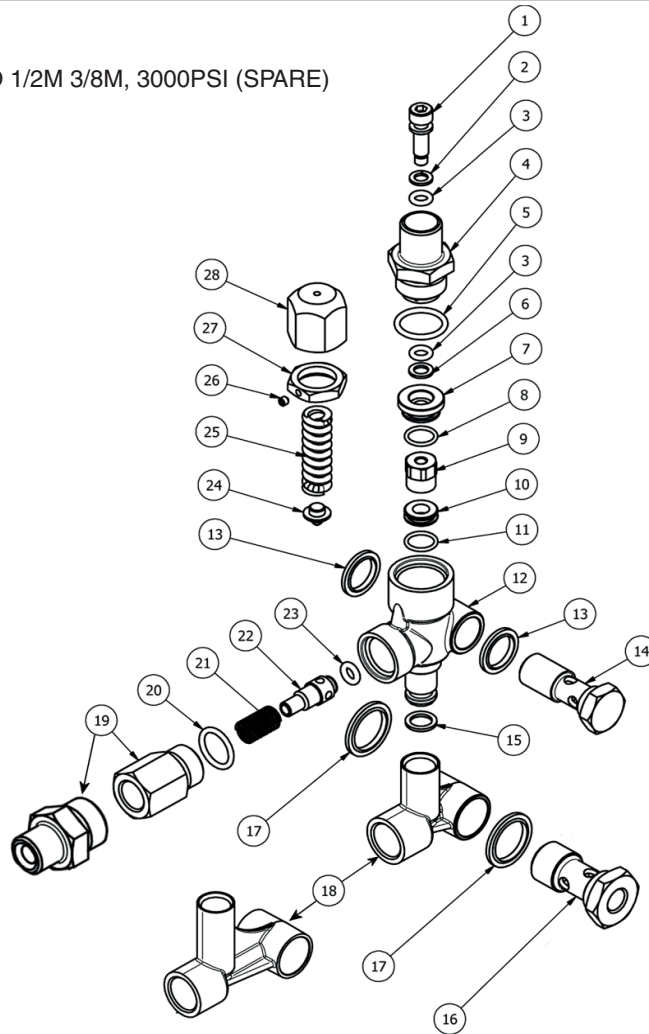


UU1 UNLOADER EXPLODED VIEW PARTS LIST

| ITEM | PART # | DESCRIPTION | KIT | QTY | ITEM | PART # | DESCRIPTION | KIT | QTY |
|------|-------------|-------------------------------|-------|-----|--------------|-------------|----------------------------------|-------|-----|
| 1 | 8.751-394.0 | Piston Housing | D | 1 | 17 | 9.149-006.0 | Sliding Connector Guide | | 1 |
| 2 | | Piston | C, D | 1 | 18 | | O-Ring Backup 6 x 1.45 x 1.68 | A, D | 1 |
| 3 | | Piston O-Ring Back Up | A, D | 1 | 19 | | Ball Housing Assy | C, D | 1 |
| 4 | 8.749-796.0 | Main Block | | 1 | 20 | | O-Ring 6.75 x 1.78 BN80 | A, D | 1 |
| 5 | 9.152-372.0 | Piston Ring | D | 1 | 21 | | Spring Seat | C, D | 2 |
| 6 | | Ball Seat | C, D | 1 | 22 | | Plunger Spring | B | 1 |
| 7 | | O-Ring 10.5 ID x 1.5 CS | A,C,D | 1 | 23 | 8.917-699.0 | Banjo Bolt 1/2" Short | | 1 |
| 8 | | Plunger | B | 1 | | 8.917-700.0 | Banjo Bolt 1/2"-1/4" NPT Short | | 1 |
| 9 | 9.152-016.0 | Plunger Housing | | 1 | 24 | 8.917-698.0 | Banjo Bolt 3/8" Short | | 1 |
| 10 | | Bypass Spring | C, D | 1 | 25 | 9.802-893.0 | Seal Washer 3/8" | | 2 |
| 11 | 9.149-001.0 | Low Pressure Port | | 1 | 26 | 9.803-921.0 | Seal Washer 1/2" | | 2 |
| 12 | 9.152-017.0 | Sliding Connector, 30mm | | 1 | | 9.802-893.0 | Seal Washer 3/8" | | 2 |
| | 8.762-005.0 | Sliding Connector, 40mm, Long | | 1 | 27 | | O-Ring 15 ID x 2CS | A,B,D | 3 |
| 13 | 9.149-002.0 | Sliding Connector H 1/2" | | 1 | 28 | 8.706-865.0 | Plug, 1/4" Countersunk | | 1 |
| | 9.149-005.0 | Sliding Connector H 3/8" | | 1 | Kit A | 9.104-038.0 | O-Ring Repair Kit | | |
| 14 | 9.196-011.0 | Plug 5/8 -18 UNF | D | 1 | Kit B | 9.104-039.0 | Outlet Kit | | |
| 15 | | O-Ring 12 ID x 2 CS | A, D | 2 | Kit C | 9.104-040.0 | Stem Basic Kit | | |
| 16 | | O-Ring 6 ID X 2 CS | A, D | 1 | Kit D | 8.920-045.0 | UU1 Complete Stem Kit | | |

VBT UNLOADER EXPLODED VIEW

8.754-696.0
UNLOADER, VBT BANJO 1/2M 3/8M, 3000PSI (SPARE)



VBT UNLOADER EXPLODED VIEW PARTS LIST

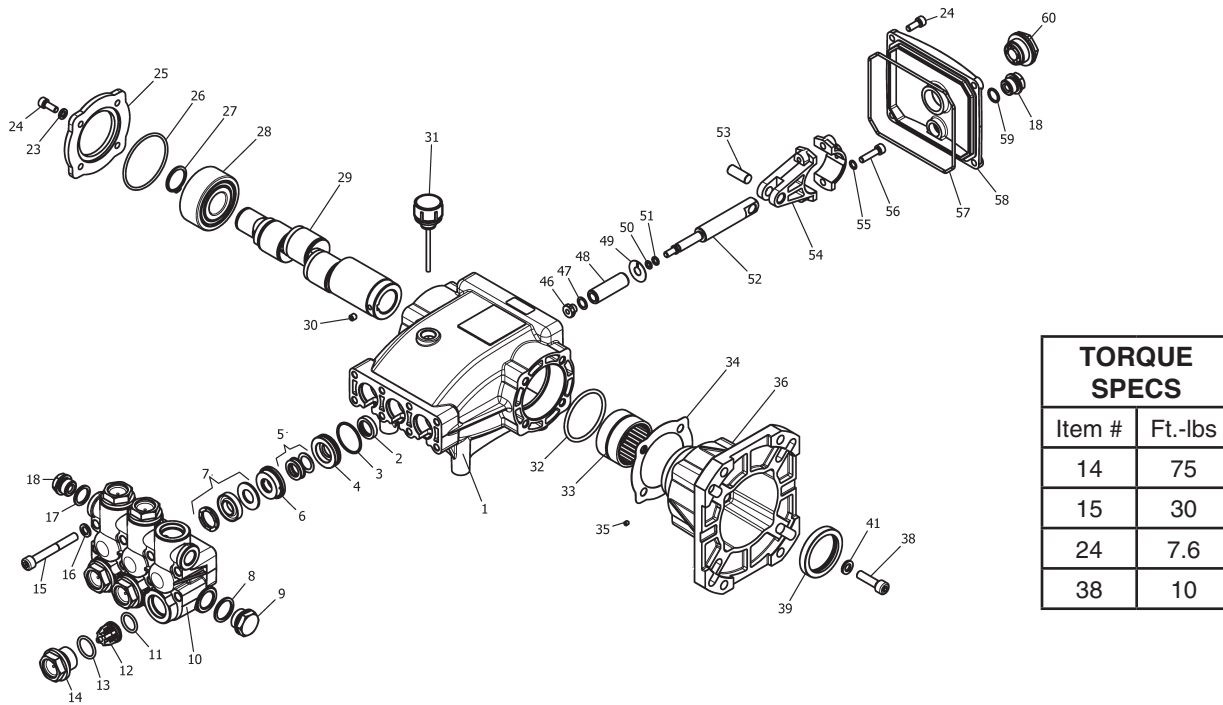
| ITEM | PART # | DESCRIPTION | KIT | QTY | ITEM | PART # | DESCRIPTION | KIT | QTY |
|------|-------------|------------------------------|-----|-----|------|-------------|--------------------------|-----|-----|
| 1* | 8.754-929.0 | Stem | C | 1 | 17 | 9.803-914.0 | Seal Washer 1/2) | | 1 |
| 2* | 9.803-912.0 | Backup Ring | A | 1 | 18 | 8.754-937.0 | Bypass Manifold | | 1 |
| 3* | 8.754-930.0 | O-ring, Ø2.62 x 6.02 | A | 2 | 19 | 9.802-892.0 | Outlet Connector 3/8 MPT | | 1 |
| 4 | 8.730-882.0 | Stem Connector | | 1 | 20* | 9.803-191.0 | O-ring, Ø2.62 X 17.13 | A,B | 1 |
| 5* | 9.803-193.0 | O-ring, Ø2.62 x 20.24 | A | 1 | 21* | 8.933-017.0 | Poppet Spring | B | 1 |
| 6* | 9.803-908.0 | Backup Ring | A | 1 | 22* | 8.754-939.0 | Poppet | B | 1 |
| 7 | 9.803-907.0 | Guide Bushing | | 1 | 23* | 8.754-940.0 | O-ring, Ø3 x 6 | A,B | 1 |
| 8* | 9.803-906.0 | O-ring, Ø1.78 x 14 | A | 1 | 24* | 8.754-961.0 | Plate | C | 1 |
| 9* | 8.754-959.0 | Ball SubAssembly | C | 1 | 25* | 8.933-018.0 | Spring 1500-4000 PSI | C | 1 |
| 10* | 8.754-933.0 | Seat | C | 1 | 26 | 8.933-021.0 | Set Screw | | 1 |
| 11* | 8.754-934.0 | O-ring, Ø1.78 x 12.42 | A,C | 1 | 27 | 9.803-925.0 | Nut | | 1 |
| 12 | 8.754-935.0 | Valve Body | | 1 | 28 | 9.803-926.0 | Knob, Brass, Unloader | | 1 |
| 13 | 9.802-893.0 | Seal Washer 3/8 | | 1 | | | | | |
| 14 | 9.803-919.0 | Banjo Bolt 3/8 | | 1 | | | | | |
| 15* | 8.754-936.0 | O-ring, Ø2.62 x 10.78 | A | 1 | | | | | |
| 16 | 9.803-920.0 | Banjo Bolt, 1/2, w/1/4" Port | | 1 | | | | | |

* Included in Kit

Kit A 8.754-941.0 O-Ring Repair Kit
Kit B 8.754-942.0 Outlet Repair Kit
Kit C 8.754-957.0 Stem Repair Kit

SS3540GR.3 PUMP EXPLODED VIEW

8.921-766.0 SS3540GR.3



SS3540GR.3 PUMP EXPLODED VIEW PARTS LIST

| ITEM | PART NO. | DESCRIPTION | QTY | ITEM | PART NO. | DESCRIPTION | QTY |
|------|---------------|------------------------|-----|------|---------------|----------------------------|-----|
| 1 | 8.751-217.0 | Crankcase | 1 | 26 | 8.717-225.0 | O-Ring Ø 2.62 x61.6 | 1 |
| 2* | See Kit Below | Plunger Oil Seal | 3 | 27 | 9.802-914.0 | Snap Ring | 1 |
| 3* | See Kit Below | O-Ring Ø1.78 x 31.47 | 3 | 28 | 9.803-168.0 | Double Row Ball Bearing | 1 |
| 4* | See Kit Below | Pressure Ring | 3 | 29 | 9.803-150.0 | Crankshaft (3040G.3) | 1 |
| 5* | See Kit Below | U-Seal, 15mm | 3 | | 9.803-151.0 | Crankshaft (3540G.3) | 1 |
| 6* | See Kit Below | Intermed. Ring 15mm | 3 | | 9.803-152.0 | Crankshaft (4040G.3) | 1 |
| 7* | See Kit Below | U-Seal, 15mm | 3 | | 9.803-153.0 | Crankshaft (5030G.3) | 1 |
| 8 | 9.803-199.0 | Copper Washer 1/2" | 1 | 30 | 9.802-945.0 | Set Screw | 1 |
| 9 | 9.802-926.0 | Brass Plug, 1/2" | 1 | 31 | 9.802-921.0 | Oil Dip Stick | 1 |
| 10 | 8.751-218.0 | Manifold Housing | 1 | 32 | 9.804-581.0 | O-Ring Ø 3.53 x 55.56 | 1 |
| 11* | 9.803-191.0 | O-Ring Ø2.62 x 17.13 | 6 | 33 | 9.803-161.0 | Needle Roller Bearing | 1 |
| 12* | See Kit Below | Valve Assembly | 6 | 34 | 8.751-230.0 | Gasket | 1 |
| 13* | 9.803-193.0 | O-Ring Ø2.62 x 20.29 | 6 | 35 | 8.717-544.0 | Screw, Set | 1 |
| 14 | 9.802-928.0 | Valve Plug | 6 | 36 | 9.803-183.0 | Engine Flange | 1 |
| 15 | 9.802-938.0 | Manifold Stud Bolt | 8 | 38 | 9.803-240.0 | Flange Screw | 4 |
| 16 | 9.802-884.0 | Washer | 8 | 39 | 9.803-142.0 | Crankshaft Seal | 1 |
| 17 | 9.803-198.0 | Copper Washer 3/8" | 1 | 41 | 9.803-221.0 | Spring Washer | 4 |
| 18 | 9.802-925.0 | Brass Plug 3/8" | 2 | 46* | See Kit Below | Plunger Nut, M6 | 3 |
| 23 | 9.803-201.0 | Washer, M6 x 16 | 4 | 47* | See Kit Below | Washer, Copper, 9.2 x 13.5 | 3 |
| 24 | 9.802-939.0 | Hexagonal Screw | 9 | 48* | See Kit Below | Plunger, 15mm | 3 |
| 25 | 9.803-184.0 | Closed Bearing Housing | 1 | 49* | See Kit Below | Copper Spacer | 3 |

SS3540GR.3 PUMP EXPLODED VIEW PARTS LIST (CONT.)

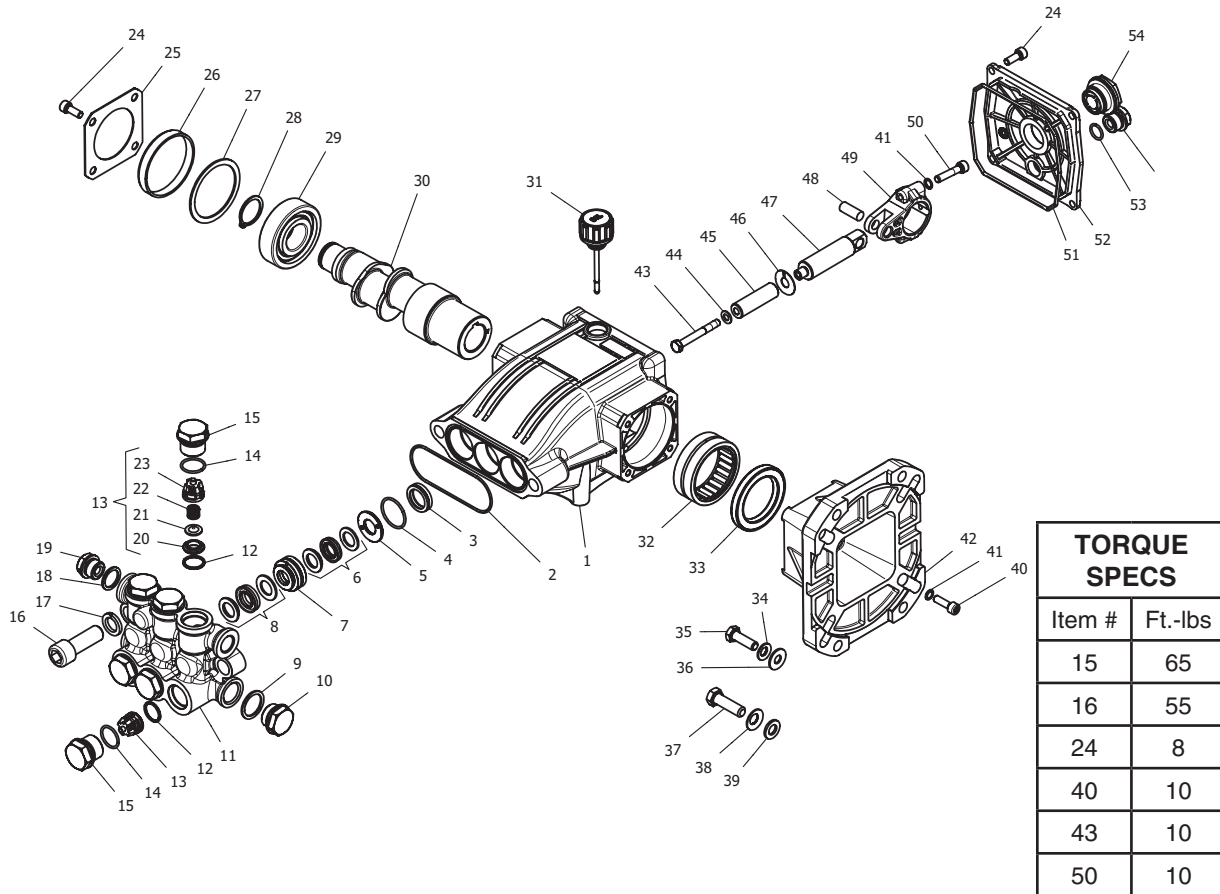
| ITEM | PART NO. | DESCRIPTION | QTY |
|------|---------------|----------------------|-----|
| 50* | See Kit Below | O-Ring Ø1.78x5.28 | 3 |
| 51* | See Kit Below | Teflon Ring | 3 |
| 52 | 8.751-225.0 | Plunger Rod | 3 |
| 53 | 8.751-228.0 | Connecting Rod Pin | 3 |
| 54 | 9.803-158.0 | Connecting Rod | 3 |
| 55 | 9.803-218.0 | Spring Washer | 6 |
| 56 | 9.803-238.0 | Connecting Rod Screw | 6 |
| 57 | 8.933-016.0 | O-Ring 2.62 x 126.67 | 1 |
| 58 | 8.751-229.0 | Crankcase Cover | 1 |
| 59 | 9.803-197.0 | O-Ring, Ø 1.78 x 14 | 1 |
| 60 | 9.803-202.0 | Sight Glass, G3/4 | 1 |

* Part available in kit (See below)

| REPAIR KIT NUMBER | 8.725-358.0 | 8.725-359.0 | 8.933-023.0 | 9.802-603.0 | 9.802-609.0 |
|---|------------------------|---------------------------------|---------------------------|----------------|----------------------|
| KIT DESCRIPTION | Plunger U-Seal 15mm | Complete U-Seal Packing 15mm | Plunger 15mm | Complete Valve | Plunger Oil Seals |
| ITEM NUMBERS INCLUDED | 3, 5, 7 | 3, 4, 5, 6, 7 | 46, 47, 48, 49, 50, 51 | 11, 12, 13 | 2 |
| NUMBER OF CYLINDERS KIT WILL SERVICE | 3 | 1 | 1 | 6 | 3 |

SP3035G1 PUMP EXPLODED VIEW

8.923-801.0 SP3035G1



SP3035G1 PUMP EXPLODED VIEW PARTS LIST

| ITEM | PART NO. | DESCRIPTION | QTY | ITEM | PART NO. | DESCRIPTION | QTY |
|------|----------------|--------------------------------|-----|------|----------------|-------------------------|-----|
| 1 | 8.754-841.0 | Crankcase | 1 | 19 | 8.707-262.0 | Plug, Brass G3/8 | 2 |
| 2 | 8.754-846.0 | O-ring Ø1.78 X 72.75 | 1 | 20* | See Kits Below | Valve Seat | 6 |
| 3* | See Kits Below | Plunger Oil Seal | 3 | 21* | See Kits Below | Valve Plate | 6 |
| 4* | See Kits Below | O-ring Ø1.78 X 26.7 | 3 | 22* | See Kits Below | Valve Spring | 6 |
| 5* | See Kits Below | Washer, Pressure Ring 14 mm | 3 | 23* | See Kits Below | Valve Cage | 6 |
| 6* | See Kits Below | U-Seal, 14 mm | 3 | 24 | 9.802-939.0 | Screw, M6 X 16 | 8 |
| 7* | See Kits Below | Pressure Ring, 14 mm | 3 | 25 | 8.717-137.0 | Bearing Cover | 2 |
| 8* | See Kits Below | U-Seal, 14 mm | 3 | 26 | 9.803-954.0 | Bearing Seal | 1 |
| 9 | 9.803-199.0 | Washer, Copper G1/2 | 1 | 27 | 8.754-843.0 | Seal Spacer, Crankshaft | 1 |
| 10 | 9.802-926.0 | Plug, Brass G1/2 | 1 | 28 | 9.802-914.0 | Snap Ring, 25 mm | 1 |
| 11 | 8.754-853.0 | Manifold | 1 | 29 | 9.803-955.0 | Bearing, Ball | 1 |
| 12* | 8.717-233.0 | O-ring Ø1.78 X 15.6 | 6 | 30 | 8.754-828.0 | Shaft, 1" Hollow 3035G1 | 1 |
| 13* | See Kits Below | Valve Assembly | 6 | | 8.754-832.0 | Shaft, 1" Hollow 3535G1 | 1 |
| 14* | 9.803-948.0 | O-ring Ø1.78 X 18.77 | 6 | | 8.754-833.0 | Shaft, 1" Hollow 4035G1 | 1 |
| 15 | 9.803-949.0 | Valve Plug | 6 | 31 | 8.754-219.0 | Oil Dipstick | 1 |
| 16 | 8.754-854.0 | Bolt, Manifold M14 x 40 | 2 | 32 | 8.754-840.0 | Bearing Needle | 1 |
| 17 | 8.754-850.0 | Washer, Lock | 2 | 33 | 8.754-826.0 | Seal, Crankshaft | 1 |
| 18 | 9.803-198.0 | Washer, Copper G3/8 | 1 | 34 | 9.802-889.0 | Washer | 4 |
| | | | | 35 | 9.803-243.0 | Screw | 4 |
| | | | | 36 | 9.803-215.0 | Washer 6 mm | 4 |

SP3035G1 PUMP EXPLODED VIEW PARTS LIST (CONT)

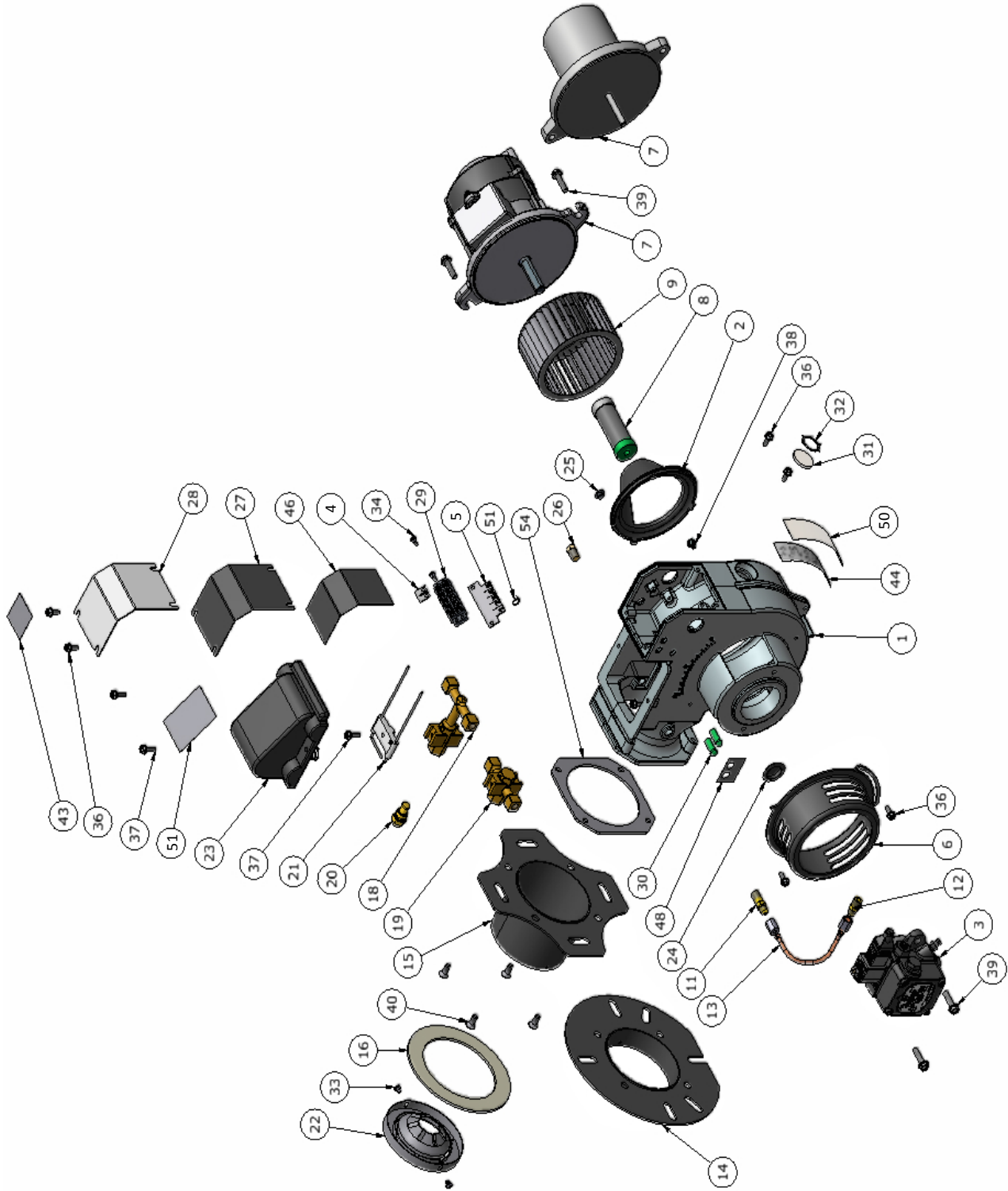
| ITEM | PART NO. | DESCRIPTION | QTY |
|------|-------------|-----------------------|-----|
| 37 | 9.803-244.0 | Screw | 4 |
| 38 | 9.803-217.0 | Washer | 4 |
| 39 | 9.803-216.0 | Washer | 4 |
| 40 | 8.752-824.0 | Screw, M6 x 20 | 4 |
| 41 | 9.803-218.0 | Washer, 6 mm | 10 |
| 42 | 8.754-864.0 | Flange, Engine | 1 |
| 43* | 8.754-855.0 | Bolt, Plunger | 3 |
| 44* | 8.754-092.0 | Spacer, Copper | 3 |
| 45* | 8.754-849.0 | Plunger, 14 mm | 3 |
| 46* | 9.803-962.0 | Spacer, Copper | 3 |
| 47 | 8.754-827.0 | Plunger Rod | 3 |
| 48 | 9.803-965.0 | Connecting Rod Pin | 3 |
| 49 | 9.803-966.0 | Connecting Rod | 3 |
| 50 | 8.933-020.0 | Screw, Connecting Rod | 6 |
| 51 | 8.754-847.0 | O-ring Ø2.62 X 111.62 | 1 |
| 52 | 8.754-842.0 | Cover, Crankcase | 1 |
| 53 | 9.803-906.0 | O-ring Ø1.78 X 14 | 1 |
| 54 | 9.803-202.0 | Sight Glass, G3/4 | 1 |

*Available in kit (See below)

| REPAIR KIT NUMBER | 8.754-860.0 | 8.754-861.0 | 8.754-862.0 | 8.754-859.0 | 9.803-937.0 |
|--------------------------------------|-------------------|----------------------------|----------------|----------------|-------------------|
| KIT DESCRIPTION | Plunger Seal 14mm | Complete Seal Packing 14mm | Plunger 14mm | Complete Valve | Plunger Oil Seals |
| ITEM NUMBERS INCLUDED | 4, 5, 6 | 4, 5, 6, 7, 8, | 43, 44, 45, 46 | 12, 13, 14 | 3 |
| NUMBER OF CYLINDERS KIT WILL SERVICE | 3 | 1 | 1 | 6 | 3 |

Replacement Parts

For best performance specify genuine KNA replacement parts



Replacement Parts

For best performance specify genuine KNA replacement parts

| Item # | Part # | Description | Qty |
|--------|-------------|---|-----|
| 23 | 8.919-116.0 | IGNITOR, BURNER 12VDC | 1 |
| 24 | 8.751-165.0 | PLUG, HOLE 0.875 PLASTIC | 1 |
| 25 | 8.750-830.0 | PLUG, HOLE 0.285 PLASTIC | 1 |
| 26 | 8.751-134.0 | PLUG, 1/8" NPT x HEX SHOULDER | 1 |
| 27 | 8.918-454.0 | GASKET, JUNCTION BOX | 1 |
| 28 | 8.750-542.0 | COVER, JUNCTION BOX | 1 |
| 29 | 8.750-116.0 | BLOCK, TERMINAL, 5 POLE | 1 |
| 30 | 8.750-817.0 | LIGHT, INDICATOR, GREEN 14V | 2 |
| 30 | 8.750-818.0 | LIGHT, INDICATOR, GREEN 28V | 1 |
| 30 | 8.750-819.0 | LIGHT, INDICATOR, GREEN 125V | 1 |
| 30 | 8.750-820.0 | LIGHT, INDICATOR, GREEN 250V | 1 |
| 31 | 8.750-784.0 | SITE GLASS | 1 |
| 32 | 8.750-785.0 | RING, PUSH ON INTERNAL, 1305-112 | 1 |
| 33 | 8.733-001.0 | SCREW, 8 x 1/4" HI LOW THREAD CUT, PPH | 2 |
| 34 | 8.718-762.0 | SCREW, 8-32 X 1/2", M PH RDH PL | 2 |
| 35 | 8.750-769.0 | SCREW, 8/32 X 3/8" PH | 1 |
| 36 | 8.718-810.0 | SCREW, 10/32 x 1/2", WHIZ LOC FLANGE | 6 |
| 37 | 8.750-770.0 | SCREW, 10/32 x 5/8", WHIZ LOC FLANGE | 3 |
| 38 | 8.750-816.0 | SCREW, 10/32 X 1/4" GROUNDING | 1 |
| 39 | 8.750-768.0 | SCREW, 1/4-20 x 1", WHIZ LOC FLANGE | 4 |
| 40 | 8.750-771.0 | SCREW, 1/4-20 X 1/2", PHIL FHMS | 4 |
| 42 | — | LABEL, BRAND NAME | 1 |
| 43 | 9.801-268.0 | LABEL, DISCONNECT POWER SUPPLY | 1 |
| 44 | — | LABEL, SERIAL PLATE | 1 |
| 46 | 9.807-339.0 | LABEL, WIRING DIAGRAM, BURNER 115V-115V | 1 |
| 46 | 9.807-340.0 | LABEL, WIRING DIAGRAM, BURNER 230V-230V | 4 |
| 46 | 9.807-341.0 | LABEL, WIRING DIAGRAM, BURNER 230V-115V | 1 |
| 46 | 9.807-342.0 | LABEL, WIRING DIAGRAM, BURNER 115V-24V | 1 |
| 46 | 9.807-343.0 | LABEL, WIRING DIAGRAM, BURNER 230V-24V | 1 |
| 46 | 9.807-344.0 | LABEL, WIRING DIAGRAM, BURNER 12VDC | 1 |
| 48 | 9.801-274.0 | LABEL, BURNER LIGHTS | 1 |
| 49 | 8.919-105.0 | PLATE, TERMINAL BLOCK NUMBERS | 1 |
| 50 | 8.716-451.0 | TERMINAL, JUMPER SPADE | 1 |
| 51 | 9.802-510.0 | CABLE, TIE, 4" BLACK | 2 |
| 52 | 9.807-348.0 | LABEL, CLEAR MYLAR | 1 |
| 53 | 9.807-345.0 | LABEL, IGNITER 120V | 1 |
| 53 | 9.807-346.0 | LABEL, IGNITER 230V | 1 |
| 53 | 9.807-347.0 | LABEL, IGNITOR 12VDC | 1 |

| Item # | Part # | Description | Qty |
|--------|-------------|--|-----|
| 1 | 8.919-050.0 | BURNER HOUSING ASSEMBLY | 1 |
| 2 | 8.751-160.0 | AIR GUIDE | 1 |
| 3 | 8.700-758.0 | FUEL PUMP, SUNTEC A2VA-3106 12-24V SOL | 1 |
| 3 | 8.700-759.0 | FUEL PUMP, SUNTEC A2VA-3106 120V SOL | 1 |
| 3 | 8.700-760.0 | FUEL PUMP, SUNTEC A2VA-3106 230V SOL | 1 |
| 3 | 8.753-000.0 | FUEL PUMP, DANFOSS 071N1298 | 1 |
| 4 | 8.750-762.0 | COIL, SOLENOID DANFOSS 230V | 1 |
| 4 | 8.750-763.0 | COIL, SOLENOID DANFOSS 115V | 1 |
| 4 | 8.750-764.0 | COIL, SOLENOID DANFOSS 12-24V | 1 |
| 5 | 8.750-765.0 | CABLE, SOLENOID COIL, DANFOSS | 1 |
| 5a | 8.750-783.0 | MOUNTING KIT, FLANGE/HUB, DANFOSS | 1 |
| 6 | 8.750-541.0 | AIR BAND | 1 |
| 7 | 8.750-517.0 | MOTOR, 1/6 HP 115V 60Hz | 1 |
| 7 | 8.750-518.0 | MOTOR, 1/6 HP 230V 60Hz | 1 |
| 7 | 8.751-074.0 | MOTOR, 1/7 HP 12VDC AMETEK | 1 |
| 8 | 8.750-543.0 | COUPLING, FLEX, 1/2" x 5/16" | 1 |
| 8 | 8.751-073.0 | COUPLING, FLEX, 5/16" x 5/16" | 1 |
| 9 | 8.750-520.0 | FAN, 4.53" X 2.42", 1/2" BORE, F115-62S | 1 |
| 9 | 8.751-072.0 | FAN, 4.53" x 2.42" x .313 BORE, F115-62S | 1 |
| 11 | 8.750-547.0 | CONNECTOR, 37 DEG FLARE X 1/8" NP LONG | 1 |
| 12 | 8.750-545.0 | CONNECTOR, 37 DEG FLARE X 1/8" NPT | 1 |
| 13 | 8.749-000.0 | FUEL LINE ASSEMBLY | 1 |
| 14 | 8.918-864.0 | FLANGE 1" TUBE ASSY, BURNER | 1 |
| 15 | 8.918-866.0 | FLANGE 3" TUBE ASSY, BURNER | 1 |
| 16 | 8.750-539.0 | GASKET, FLANGE | 1 |
| 17 | 8.750-528.0 | DISK, STATIC 2.00 | 1 |
| 17 | 8.918-868.0 | DISK, STATIC 2.75 | 1 |
| 17 | 8.918-869.0 | DISK, STATIC 2.50 | 1 |
| 17 | 8.918-870.0 | DISK, STATIC 2.25 | 1 |
| 18 | 8.750-526.0 | GUN, ELECTRODE / NOZZLE, 3" | 1 |
| 19 | 8.750-525.0 | GUN, ELECTRODE / NOZZLE, 1" | 1 |
| 20 | Varies | NOZZLE, FUEL | 1 |
| 21 | 8.750-778.0 | ELECTRODE, IGNITION | 1 |
| 22 | 8.750-779.0 | CONE, AIR F4 | 1 |
| 22 | 8.750-782.0 | CONE, AIR F6 | 1 |
| 22 | 8.750-780.0 | CONE, AIR F12 | 1 |
| 22 | 8.750-781.0 | CONE, AIR F22 | 1 |
| 23 | 8.919-114.0 | IGNITOR, BURNER 120V | 1 |
| 23 | 8.919-115.0 | IGNITOR, BURNER 230V | 1 |

SPECIFICATIONS

BECKETT BURNER SPECIFICATIONS

| Model # | Burner Assy # | Fuel Nozzle | Transformer | Burner Motor | Fuel Pump/ Solenoid Cord | Fuel Pump/ Solenoid Coil | Electrode |
|-------------|---------------|-------------|-------------|--------------|-----------------------------|-----------------------------|-------------|
| 1.110-059.0 | 9.802-554.0 | 9.802-585.0 | 9.802-663.0 | 9.802-638.0 | 9.802-562.0 | 9.802-639.0 | 9.802-670.0 |
| 1.110-054.0 | 9.802-560.0 | 8.754-895.0 | 9.802-663.0 | 9.802-638.0 | 9.802-562.0 | 9.802-639.0 | 9.802-670.0 |
| 1.110-055.0 | 9.802-560.0 | 9.802-575.0 | 9.802-663.0 | 9.802-638.0 | 9.802-562.0 | 9.802-639.0 | 9.802-670.0 |
| 1.110-056.0 | 9.802-560.0 | 9.802-575.0 | 9.802-663.0 | 9.802-638.0 | 9.802-562.0 | 9.802-639.0 | 9.802-670.0 |
| 1.110-057.0 | 9.802-560.0 | 9.802-576.0 | 9.802-663.0 | 9.802-638.0 | 9.802-562.0 | 9.802-639.0 | 9.802-670.0 |

SHARK CLEAR FLAME BURNER SPECIFICATIONS

| Model # | Burner Assy # | Fuel Nozzle | Ignitor | Burner Motor | Fuel Pump | Solenoid Coil | Electrode |
|-------------|---------------|-------------|-------------|--------------|-------------|---------------|-------------|
| SGP-302517 | 8.918-910.0 | 8.754-891.0 | 8.919-116.0 | 8.751-074.0 | 8.753-000.0 | 8.750-764.0 | 8.750-778.0 |
| SGP-303037 | 8.918-906.0 | 8.754-895.0 | 8.919-116.0 | 8.751-074.0 | 8.753-000.0 | 8.750-764.0 | 8.750-778.0 |
| SGP-353037 | 8.918-906.0 | 8.754-888.0 | 8.919-116.0 | 8.751-074.0 | 8.753-000.0 | 8.750-764.0 | 8.750-778.0 |
| SGP-353037E | 8.918-906.0 | 8.754-888.0 | 8.919-116.0 | 8.751-074.0 | 8.753-000.0 | 8.750-764.0 | 8.750-778.0 |
| SGP-403537E | 8.918-906.0 | 8.754-888.0 | 8.919-116.0 | 8.751-074.0 | 8.753-000.0 | 8.750-764.0 | 8.750-778.0 |